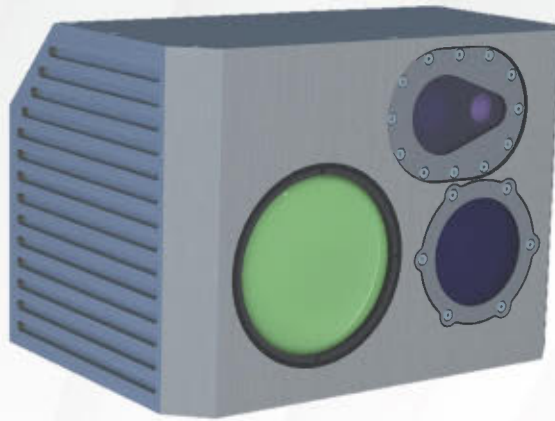


TEOPS

ELECTRO-OPTICAL SYSTEMS

WEAPON STATION SWAP ELECTRO-OPTICAL SUITE



FEATURES

- Customized electro-optical systems
- Different imaging channel options (Visible, SWIR, MWIR, LWIR)
- Optics, sensors and LRF selection depending on range requirements
- Design according to Military Standards
- Single interface to control all channels

SPECIFICATION	VALUE
VISIBLE CHANNEL	
Resolution	1280 x 720
Zoom	30x
INFRARED CHANNEL	
Wavelength	8-14 μm (LWIR)
Resolution	640 x 480
Pixel Pitch	12 μm
NETD (20°C BB, %35 WF)	25 mK
Zoom	5x
Detection Range(NATO)	7.1 km
Recognition Range (NATO)	2.1 km
Identification Range (NATO)	1.4 km
LASER RANGE FINDER	
Laser Type	1.5 μm (Class I)
Maximum Range	7 km (6 km NATO Target)
Resolution	± 1 m
INTERFACES	
Communication	Ethernet
Image Output	Ethernet
Image Processing Options	Field correction, bad pixel replacement, non-uniformity correction, image compression, target detection, target tracking
ENVIRONMENTAL CONDITIONS	
Operating Temperature	-20 °C ... +55 °C
Storage Temperature	-40 °C ... +70 °C
Shock	25 g 11 ms
SWAP	
Weight	4 kg
Size	181x138x127 mm
Power	20 W nominal, 30 W maximum

